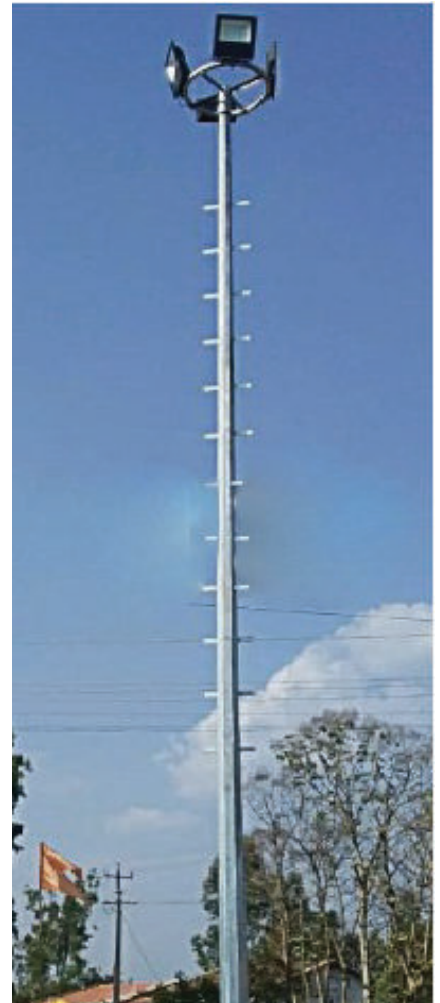




Catalogue 2023-24

Sri Parshwanath Industries
(Manufacturers of Led Fixtures & Lighting Poles)



Company Profile

Ashoka

The Heart Of Lighting



ISO 9001:2015

Dear Sir / Madam,

We are a leading manufacturer of LED-LIGHTS.

We Manufacture

- a. LED Lighting Fixtures**
- b. LED Drivers.**
- c. Conventional Lighting Ballasts**

Please find below a brief background of our company

Our Company History

We started in 1987, as manufacturer of conventional ballasts (popularly known as chokes) for tube-lights. As lamp market progressed, we too moved on to CFL ballasts and HID ballasts. As technology moved on, we too moved from conventional type of ballasts to VPIT open type ballasts. We made the entire range - from 6W to 1000W.

Along the path we added Lighting Fixtures (to our product range).

At Present:

Now since the technology has moved towards LED Lighting, we too have upgraded, rather we have re-invented ourselves to become one of the best manufacturers of LED fixtures, Drivers and Poles. Our Product portfolio consists of both Indoor and Outdoor LED lighting products

Our Clients include the leading OEMs in South India.

We also promote our own brand of Ashoka Lighting.

Our key differentiators are our

- a. Quality and**
- b. Customer Service**

Our vision is to create and cater the best Lighting Products in both outdoor and indoor segments.

We look forward to hear from you regarding your Lighting requirements .

Thank You,

Sri Parshwanath Industries, Bangalore



- Led Street Lights	01 - 03
- Back Driver Led Street light	04
- HighPower Led Street Light With Lens	05
- Splendid Series (Led & Lens) & Sparkle Led Light	06
- Slim Lens Led Street Light & Solar Street Light	07
- Solar Semi Integrated Led Street Light	08
- Slender Led Street Light	09
- Front Driver Led Flood Light Series	10 - 12
- Back Driver Led Flood Light	13
- Back Driver Led Flood Light With Highpower Lens	14
- Elegant Led Highbay With & Without Reflector	15
- Elegant Highpower Highbay With Lens & Led Diffuser	16
- Led Ufo Highbay Without Reflector	17
- Led Ufo Highbay With Reflectors	18
- Led Toplite , Led Wellglass & Post Top Lantern	19
- Led Panel Lights	20 - 22
- Led Tubelight & Led Accessories	23
- Street Lighting Poles	24- 28



Street Light Applications :

- Used for street lighting like roads, parks etc..

LED STREET LIGHT

Model : SVE (S)

Wattage	Dimension in mm (L x B x H)
12W	328*107*50
15W	328*107*50
24W	328*107*50
50W	388*156*60
60W	388*156*60
72W	388*156*60
90W	410*180*75
100W	410*180*75



Model : SCSE (S)

Wattage	Dimension in mm (L x B x H)
50W	363*136*50

LED STREET LIGHT



Model : SC (S)

Wattage	Dimension in mm (L x B x H)
24W	363*136*50
30W	363*136*50
36W	390*150*55
42W	390*150*55
100W	509*256*65
120W	509*256*65
150W	509*256*65

LED STREET LIGHT

Model : SCS (S)



Wattage	Dimension in mm (L x B x H)
30W	350*120*50
36W	350*120*50
40W	363*136*50
50W	390*150*55
60W	390*150*55
72W	390*150*55

Model : SCE(S)

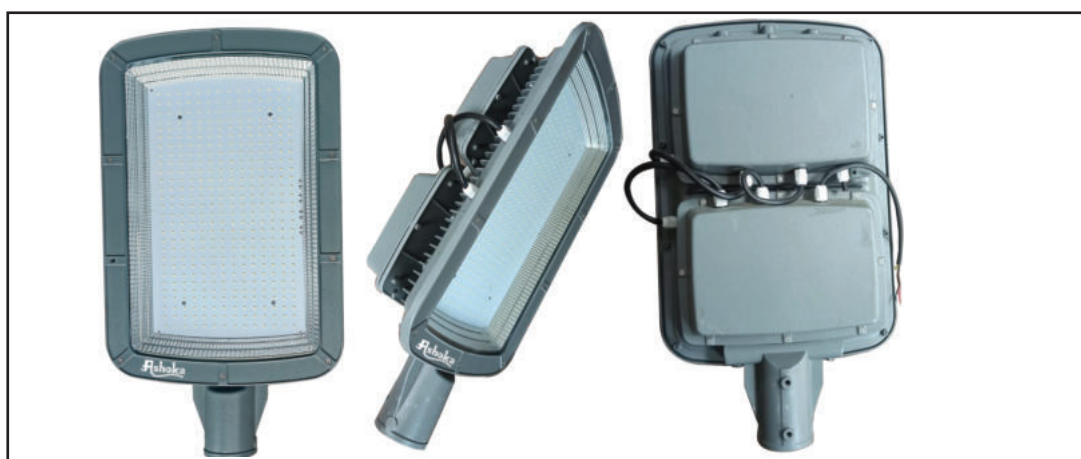
Wattage	Dimension in mm (L x B x H)
50W	430*205*60
60W	430*205*60
72W	430*205*60
90W	430*205*60
100W	430*205*60



BACK DRIVER LED STREET LIGHT



Model	Wattage	Dimension in mm (L x B x H)
SCB(S)	72W	360*160*80
SCB(S)	100W	470*230*85
SCB(S)	120W	470*230*85
SCB(S)	150W	555*262*88
SCB(S)	200W	555*262*88



Model	Wattage	Dimension in mm (L x B x H)
SVB(S)	250W	500*340*80
SVB(S)	300W	500*340*80
SVB(S)	400W	500*340*80

HIGH POWER LED STREET LIGHT LENS



Model	Wattage	Dimension in mm (L x B x H)
SCSHP (S)	36W	350*120*50



Model	Wattage	Dimension in mm (L x B x H)
SCBHP (S)	72W	360*160*80
SCBHP (S)	90W	360*160*80
SCEHP (S)	90W	430*205*60
SCBHP (S)	100W	404*180*115
SCBHP (S)	120W	404*180*115
SCBHP (S)	150W	470*230*85
SCBHP (S)	200W	555*262*88

SPLENDID LED STREET LIGHT



Model : SCIL



Wattage	Dimension in mm (L x B x H)
28W	240*80*68
45W	242*95*70
92W	235*160*95

SPLENDID HIGHPOWER LED STREET LIGHT

Model : SCILHP

Wattage	Dimension in mm (L x B x H)
72W	235*160*95
150W	370*200*82



SPARKLE LED STREET LIGHT (For Square Poles)

Model : SPSL



Wattage	Dimension in mm (L x B x H)
30W	345*80*1.2 (TH)
36W	345*80*1.2 (TH)
60W	345*80*1.2 (TH)
72W	365*80*1.2 (TH)
90W	365*80*1.2 (TH)

SLIM LENS LED STREET LIGHT



Model	Wattage	Dimension in mm (L x B x H)
SSDPLS(S)	24W	262*110*60
SSDPLS (S)	36W	325*123*60
SVPLS (S)	50W	340*130*45
SVPLS (S)	72W	395*162*45
SVPLS (S)	90W	470*190*70
SVPLS (S)	100W	470*190*70
SVPLS (S)	120W	570*205*70
SVPLS (S)	150W	570*205*70

SOLAR SEMI - INTEGRATED LED STREET LIGHT

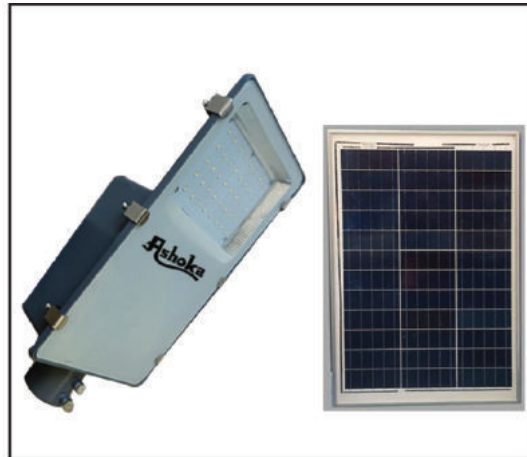


Model : SWSBG

Wattage	Dimension in mm (L x B x H)
24W	332*182*110
30W	332*182*110

SOLAR SEMI-INTERGATED LED STREET LIGHT

Model : PSSSL



Wattage	Dimension in mm (L x B x H)	BATTERY	PANEL WATTAGE
15W	410*250*95	12V-18αH	50W
20W	410*250*95	12V-18αH	60W
20W	410*250*95	12V-24αH	60W
24W	410*250*95	12V-24αH	60W

SOLAR SEMI - INTEGRATED LED STREET LIGHT

Model : SWSBL



Wattage	Dimension in mm (L x B x H)
24W	332*182*110
30W	332*182*110

SLENDER LED STREET LIGHT



Model	Wattage	Dimension in mm (L x B x H)
SRPL(S)	24W	355*50*65
SRPL (S)	36W	410*50*65
SRPL (S)	50W	486*50*65

SLENDER HIGHPOWER LENS LED STREET LIGHT



Model	Wattage	Dimension in mm (L x B x H)
SRPLHP (S)	60	486*50*65

FRONT DRIVER LED FLOOD LIGHT



Model	Wattage	Dimension in mm (L x B x H)
SKFS (S)	10W	142*120*37
SKFS (S)	20W	142*120*37
SKFS (S)	120W	314*233*45
SKFS (S)	180W	385*285*55



Model	Wattage	Dimension in mm (L x B x H)
SHFS (S)	50W	216*222*40
SHFS (S)	100W	268*280*50
SHFS (S)	120W	284*284*72
SHFS (S)	150W	284*284*72

NEO FRONT DRIVER LED FLOOD LIGHT

Model : SVFSWG



Wattage	Dimension in mm (L x B x H)
50W	215*205*60
100W	270*245*70
150W	305*285*70
200W	345*325*80

SLIM LENS LED FLOOD LIGHT

Model : SVSFL (S)



Wattage	Dimension in mm (L x B x H)
36W	160*195*40
50W	175*220*40
100W	225*280*40
150W	260*315*45
200W	300*375*45

PERFO LED FLOOD LIGHT

Model : SVFSPF (S)



Wattage	Dimension in mm (L x B x H)
36W	180*155*50
50W	198*230*55
100W	283*245*55
150W	355*293*62
200W	425*326*45

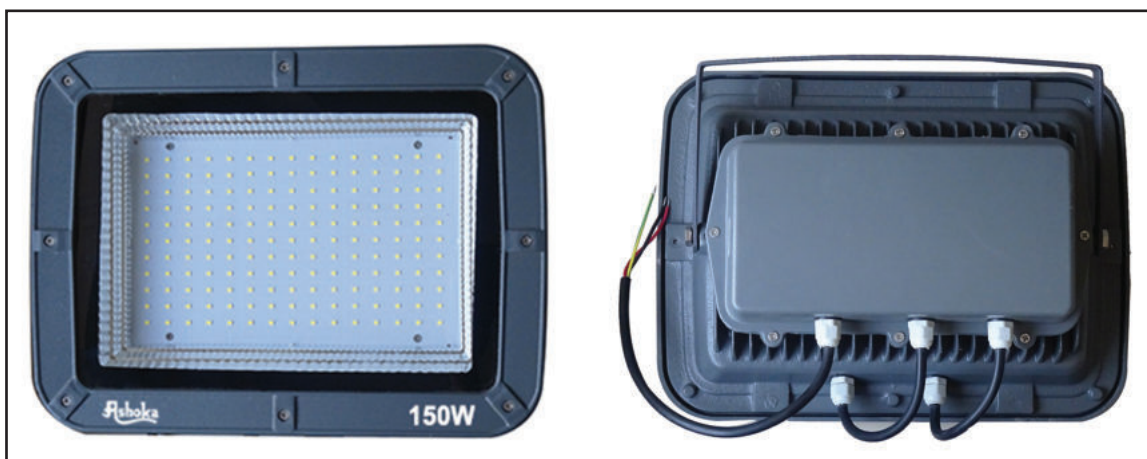
BACK DRIVER LED FLOOD LIGHT

Model : SKBFS (S)



Wattage	Dimension in mm (L x B x H)
250W	206*196*40
300W	206*196*40

BACK DRIVER LED FLOOD LIGHT



Model	Wattage	Dimension in mm (L x B x H)
SVBFS (S)	60W	245*180*65
SVBFS (S)	100W	295*240*70
SVBFS (S)	120W	345*250*70
SVBFS (S)	150W	345*250*70
SVBFS (S)	180W	390*300*80
SVBFS (S)	200W	390*300*80
SVBFS (S)	250W	500*340*80
SVBFS (S)	300W	500*340*80
SRDFS (S)	400W	380*290*70
SVBFS (S)	400W	500*340*80

BACK DRIVED LED FLOOD LIGHT WITH HIGHPOWER LENS



Model	Wattage	Dimension in mm (L x B x H)
SVBFHP (S)	60W	245*180*60
SVBFHP (S)	100W	295*240*70
SVBFHP (S)	150W	390*300*80
SVBFHP (S)	200W	390*300*80
SVBFHP (S)	300W	500*340*80
SVBFHP (S)	500W	600*395*170
SVBFHP (S)	600W	600*395*170

ELEGENT LED HIGHBAY WITHOUT REFLECTOR



Model	Wattage	Dimension in mm (OD x H)
SBHB (S)	80W	280*55
SBHB (S)	100W	280*55
SBHB (S)	120W	280*55
SBHB (S)	200W	370*70
SBHB (S)	250W	370*70

ELEGENT LED HIGHBAY WITH REFLECTOR



Model	Wattage	Dimension in mm (ID x OD x H)
SBHBR (S)	200W	300*410*75
SBHBR (S)	250W	300*410*75

ELEGANT HIGH POWER LED HIGHBAY



Model	Wattage	Dimension in mm (OD x H)
SBHBHP (S)	120W	225*100
SBHBHP (S)	250W	320*100

STAR LED HIGHBAY



Model	Wattage	Dimension in mm (OD x H)
SKBHBST (S)	100W	225*120
SKBHBST (S)	150W	325*120
SKBHBST (S)	200W	330*140

UFO LED HIGHBAY WITHOUT REFLECTOR



Model	Wattage	Dimension in mm (OD x H)
SBUFO (S)	50W	225*45
SBUFO (S)	80W	225*45
SBUFO (S)	80W	225*45
SBUFO (S)	120W	320*50
SBUFO (S)	150W	320*50
SBUFO (S)	200W	370*70

UFO LED HIGHBAY WITH REFLECTOR



Model	Wattage	Dimension in mm (OD x H)
SBUFOR (S)	50W	225*320*70
SBUFOR (S)	80W	225*320*70
SBUFOR (S)	80W	225*320*70
SBUFOR (S)	120W	300*410*75
SBUFOR (S)	150W	300*410*75
SBUFOR (S)	200W	300*410*75

WELL GLASS

Model : SIWG (S)

Wattage	Dimension in mm
42W	161*105



TOPLITE

Model : STV (S)



Wattage	Dimension in mm
30W	14 inch's
50W	14 inch's
80W	18 inch's
100W	18 inch's

POST TOP LANTERN

Model : Inspire Series

Wattage	Dimension in inch
30W	12 Inches
50W	14 Inches
72W	18 Inches

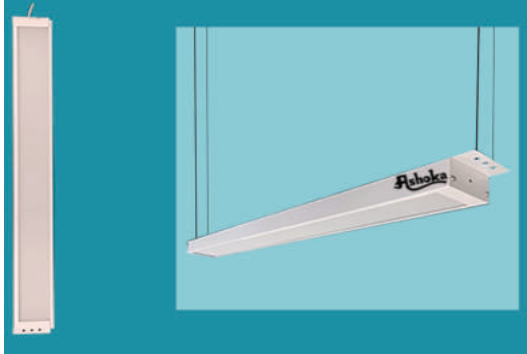


Model : Ring Light Series

Wattage	Dimension in mm
30W	410*250
50W	410*250

MARVEL LED PANEL LIGHT

Model : SVFMSP

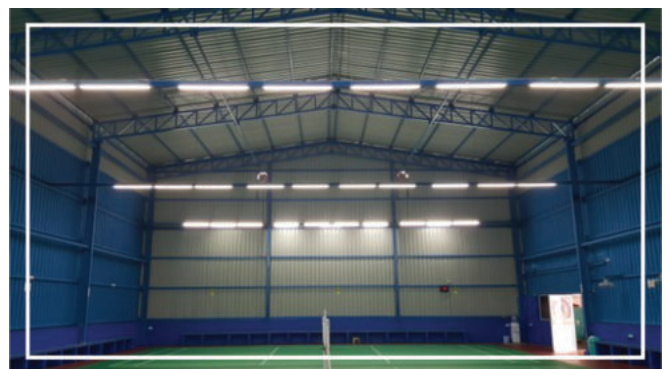
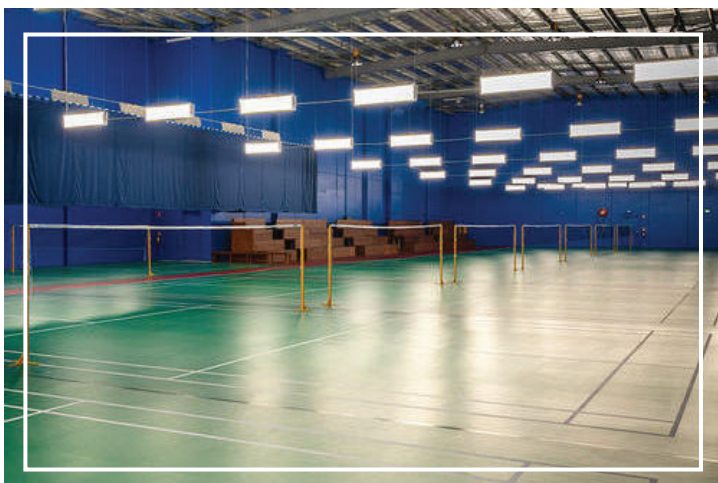


Wattage	Dimension in mm (L x B x H)
40W	1250*100*45
60W	1250*100*45
80W	1250*100*45

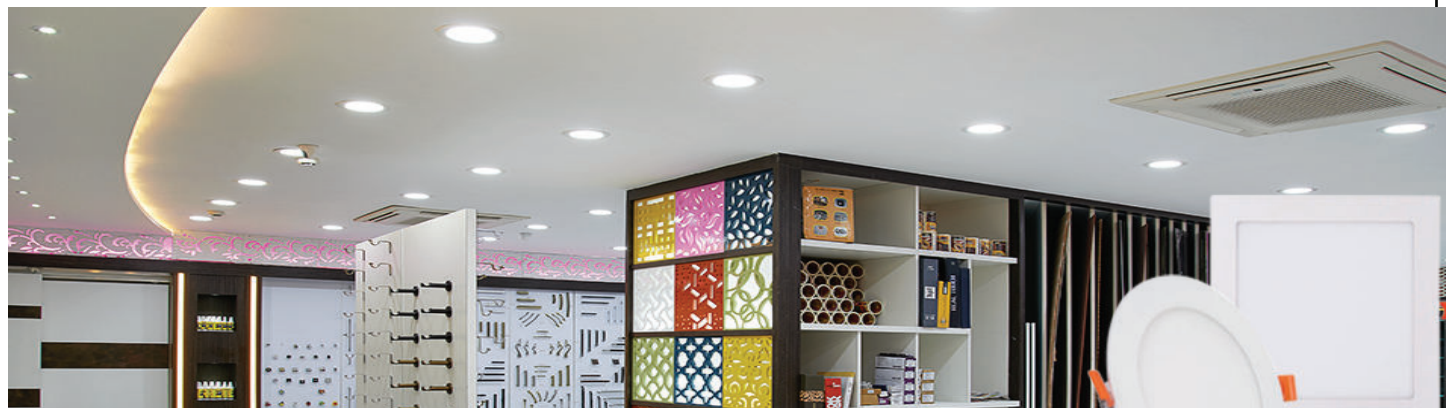
BADMINTON LED PANEL LIGHT

Model : SVFMSP

Wattage	Dimension in mm (L x B x H)
120W	1250*265*45
150W	1250*265*45



SLIM PANEL



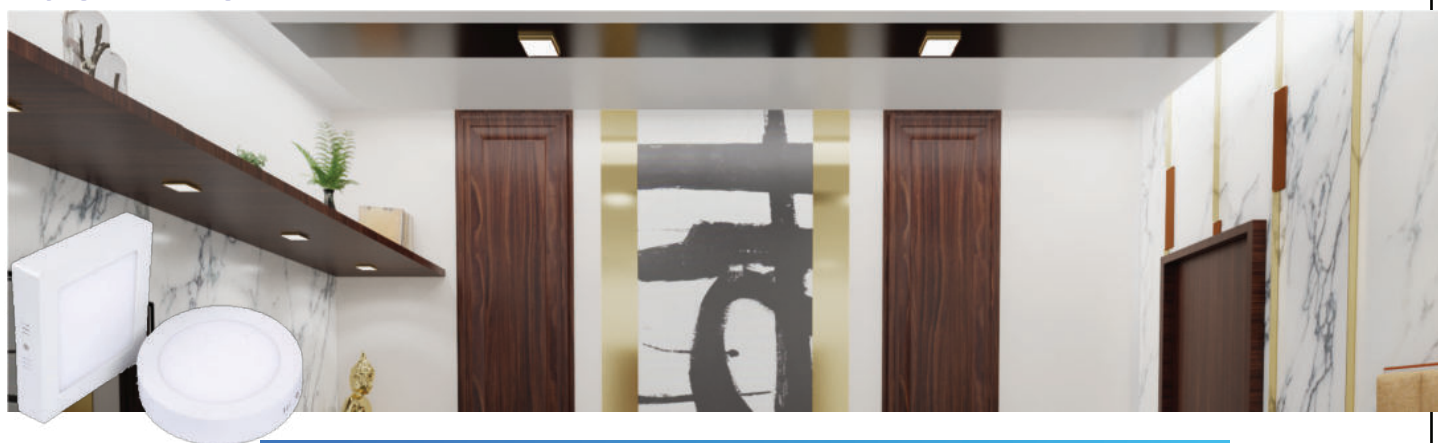
Square Panel

Wattage	Dimension in mm	
	OUTER	INNER
3W	90	75
8W	120	105
15W	175	155
22W	225	205

Round Panel

Wattage	Dimension in mm	
	OUTER	INNER
3W	90	75
8W	120	105
15W	170	150
22W	225	205

SURFACE PANEL



Wattage	Dimension in mm	
	Square	Round
8W	120	120
15W	167	175
22W	222	223

ANGULAR LED PANEL LIGHT



Model : SSPNLS - 2 x 2 (45mm)

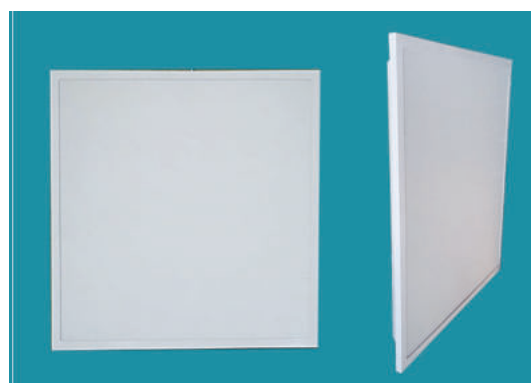
Wattage	Dimension in mm (L x B x H)
36W	595*595*45

Model : SSPNLD - 2 x 2 (70mm)

Wattage	Dimension in mm (L x B x H)
36W	595*595*75



RECESS LED PANEL LIGHT



Model : SSSFD - 2 x 2 (70mm)

Wattage	Dimension in mm (L x B x H)
36W	592*592*75

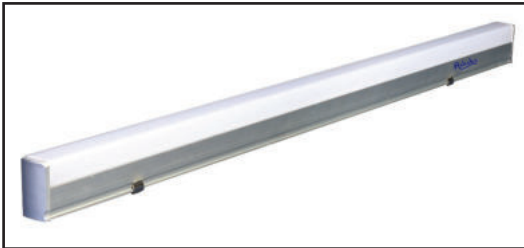
Model : SSPNL4 - 1x4 (70mm)

Wattage	Dimension in mm (L x B x H)
36W	1195*288*75



LED TUBELIGHT

1. Model : SCTA & SVTA - Aluminium Casting



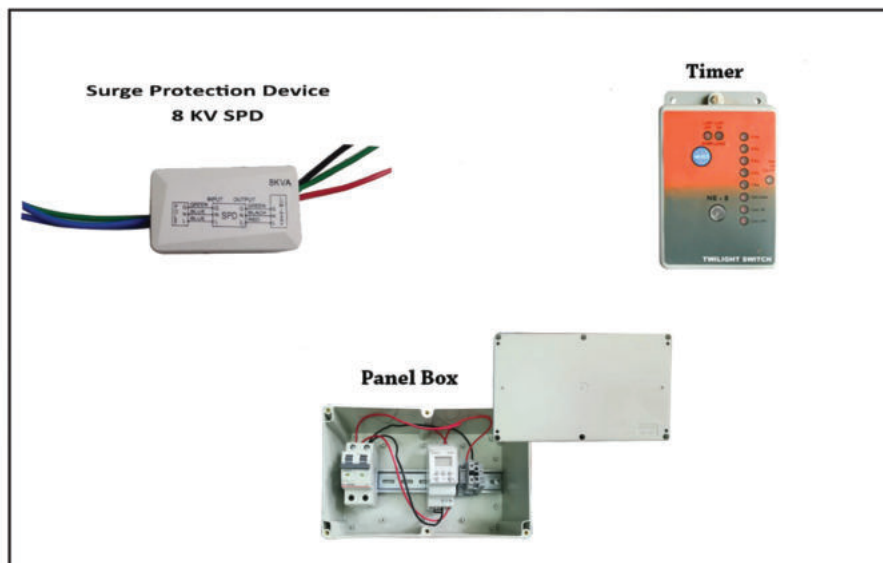
Wattage	Size
20W	4 feet
36W	4 feet

2. Model : SCTP - Plasto Casting

Wattage	Size
20W	4 feet

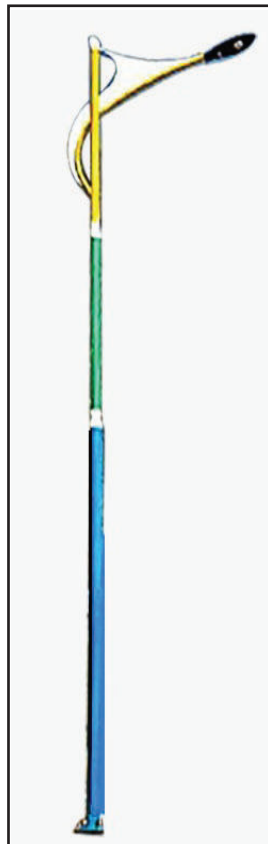


LED ACCESSORIES



Product	Description
SPD	10 K V
Twilight Switch	3 K W
Panel Box	16A

TUBULAR POLE



Height (In MM)	Dimension (in MM)	Foundation Bolt (In MM)
03	114*76	12*450
04	114*76	12*450
05	114*88*76	12*500
06	114*88*76	12*600
07	114*88*76	12*600
08	140*114*88*76	20*550
09	140*114*88*76	20*650

Extra Features -

- Available In Painted, Powder Coated and GI Model
- Available In Designer Arms & Different Size's

OCTAGONAL POLE



Height (in mm)	Dimension (in mm)	Foundation Bolt (in mm)
05	130*70	12*500
06	130*70	12*500
07	130*70	12*550
08	130*70	12*550
09	155*70	16*600
10	175*70	20*600
12	240*90	20*750

Extra Features -

- Available Only In Galvanized Model.
- Customized Arm's Size available in both single and Double with Desiner Arms as Well.

SQUARE POLE



Height	Dimension in mm
04	100*100
05	100*100
06	100*100
07	100*100

Extra Features -

- Available in Single and Double Arm
- Customized Arm can be done.

SOLAR POLE

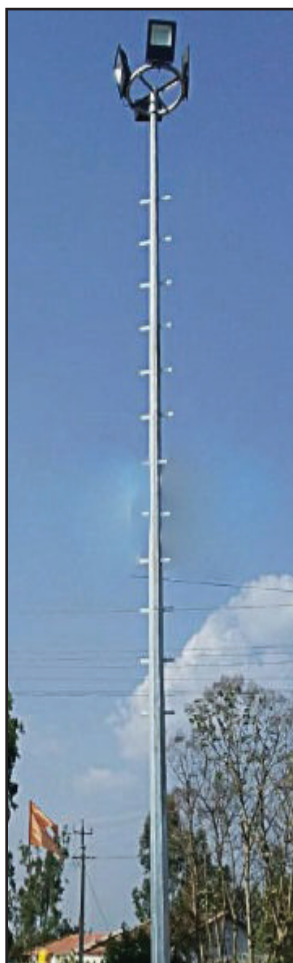
Height	Dimension in mm
05	76*60
06	76*60
07	90*65

Extra Features -

Available with Dimming option.



MINIMAST POLE



Height (in Mtrs)	Dimension (in mm)	Foundation Bolt (in mm)
09	155*70	16*600
10	175*70	16*750
12	240*90	20*800

Extra Features -

- Option of Ladder Facility.
- Available in 4 / 6 Light Ring.

HIGHMAST POLE



Height (in Mtrs)	Dimension in mm (in MM)	Foundation Bolt (in MM)
12	310*100	24*850
16	360*150	24*850
20	410*150	24*910
30	540*150	30*1200

Extra Features -

- Available with Electrical and Manual Hoist System.

POLE IMAGES





Certificate of Compliance
INTEGRATED QUALITY CERTIFICATION PRIVATE LIMITED
hereby certifies that the Quality Management Systems of
SRI PARSHWANATH INDUSTRIES



No. 67/61, 2nd Main Road,
Industrial Town, Rajajinagar,
Bangalore - 560 044, Karnataka, India.



has been assessed and conforms to the
Quality Management Systems
ISO 9001:2015

Scope: Design, manufacture and supply of ballasts.
Assembly of lighting fixtures & led solutions.

EA/NACE : 19a - 31.20, 31.50

Process(es) not applicable : None

Certificate number : IND/QMS/NAB-C1915/3050

Attachment(s) : None

Current issue date : 19.09.2020

Current expiry date : 18.09..2023

1st Surveillance due : 18.09.2021

2nd Surveillance due : 18.09.2022




H. Narasimhaiah
Director

Certificate of compliance has an expiry period of 3 years from the current certification cycle start date but shall be considered as expired if the surveillance audit programme indicated in this certificate of compliance is not implemented to maintain confidence that the certified management system continues to fulfil requirements unless otherwise supported by a letter of continued compliance issued by the registered office of Integrated Quality Certification Pvt. Ltd. Certificate of compliance shall be updated in website/registry as suspended and/or withdrawn if the surveillance programme prior to the due date indicated above is not coordinated and implemented. Written information on any significant organizational changes with impact on the certificate of compliance shall be communicated to Integrated Quality Certification Pvt. Ltd prior to the planned audit schedule.


भारतीय मानक ब्यूरो

(उपभोक्ता मामले, खाद्य एवं सार्वजनिक वितरण मंत्रालय, भारत सरकार)

BUREAU OF INDIAN STANDARDS

 (Ministry of Consumer Affairs, Food & Public Distribution,
Govt. of India)

मानक भवन, 9 बहादुर शाह जफर मार्ग, नई दिल्ली - 110002

Manak Bhavan, 9 Bahadur Shah Zafar Marg, New Delhi - 110002

दूरभाष / Phone: +91-11-23230856/2323010131/23233375/23239402

ई-मेल / E-mail: registration@bis.gov.in

 वेबसाइट / Website: <https://bis.gov.in/>, <https://www.crsbis.in/BIS/>

Our Ref: Registration/CRS 2020-4314/R-62002275

Date:08-12-2020

Subject : Licence Document

Manufacturing Unit :	SRI PARSHWANATH INDUSTRIES #67/61,2ND MAIN ROAD, INDUSTRIAL TOWN RAJAJINAGAR, BANGALORE KARNATAKA,India-560044 parshwanathled@gmail.com 23148823	
----------------------	-----------------------------------------------------------------------------------------------------------------------------------------------------------------	--

Dear Sir,

1. With reference to your Application, we are pleased to inform you that it has been decided to grant you licence as per details given below :

Product Category:	Led Luminaires For Road And Street Lighting
Product Name:	LED Luminaires for Road and Street lighting
IS NO :	IS 10322 (PART 5/SEC 3) : 2012
Brand (As Declared by Manufacturer) :	ASHOKA
Model :	[Brand -> ASHOKA, Models -> 24W SC(S), 24W SAE(S), 20W SAE(S), 24W SS(S), 72W SCE(S), 72w SCB(S), 36w SC(S), 30W SC(S), 36W SCS(S), 30W SCS(S), 120w SC(S), 60w SCE(S), 100w SCB(S), 150w SC(S), 100w SC(S), 90w SCE(S), 50w SCE(S), 50w SCS(S), 42w SC(S), 200w SCB(S)]
Factory Address :	#67/61,2ND MAIN ROAD, INDUSTRIAL TOWN RAJAJINAGAR, BANGALORE KARNATAKA,India-560044

2. The licence is being granted for your unit located at the address and for the brand and models mentioned at serial no 1 above.

 3. The number assigned to this Licence is **R-62002275** which has been made operative from **08-12-2020** and is valid upto **07-12-2022** . The Licence Number should invariably be referred to in your future correspondence.

4. The rights and privileges under the licence shall not be exercised by any other factory / organization at any other location. This licence is not transferable. In the event of shifting of the manufacturing machinery from the registered premises to some other place use of the licence Number shall be stopped and BIS shall be informed.

5. The licensee shall comply with the provisions of the Act, rules and regulations framed thereunder and as amended from time to time.

6. The licensee shall follow the guidelines for the use of Standard Mark and labeling requirements as per Annex-I.

7. The licensee shall not use the licence in any manner which contravenes the provisions of Act, rules and regulations framed thereunder and as amended from time to time.

8. Upon expiry of validity, stoppage or suspension or cancellation of licence, you shall discontinue forthwith the self declaration of conformity to the relevant Indian Standard(s) and withdraw all promotional and advertising matter which contains any reference thereto.

9. For renewal of licence, the licensee shall have to apply to BIS three months in advance before expiration of the licence and application form for renewal is available on BIS website.

10. The licence is not transferable. Kindly acknowledge receipt of this letter.

Thanking you,

Yours faithfully,
(Vibha Rani)
Sc. D
Telfax : +91-11-23230856
E-mail: registration@bis.gov.in

Note: This is a system generated letter. Hence signature is not required.

To verify authentication of letter, kindly scan the QR code on this letter.

Your world deserves the Best!

Our brand's promise is our simplicity. It encapsulates our commitment to deliver the products and solutions, that are advanced, user friendly & are designed to meet the need of our users or customers..



AshokaTM
The Heart Of Lightings



Our Values :

- Delivers on Time
- Delighted Customers
- Customer Satisfaction
- Cooperative Nature of Work

Sri Parshwanath Industries

#67/61, 2nd Main, Rajajinagar Industrial Town,
Bengaluru - 560010

office@ashokalightings.com, sales@ashokalightings.com

<https://ashokalightings.com/>

8867460891, 9591344400, 9945841331